

Securing the Future of ASSE and the Safety Profession

A Changed World

- 20 Years Since Last Governance Structure Change
- A Changed Environment
- Increasingly Competitive Environment for Professional Associations
- A Changed ASSE
- Advancement of Best Practices in Association Management

What's the Urgency?

- Align our governance model with the strategic plan
- Increase strategic focus and improve operational efficiencies and effectiveness
- Maximize volunteer resources
- Create a stronger member voice that reflects our evolving and diverse membership

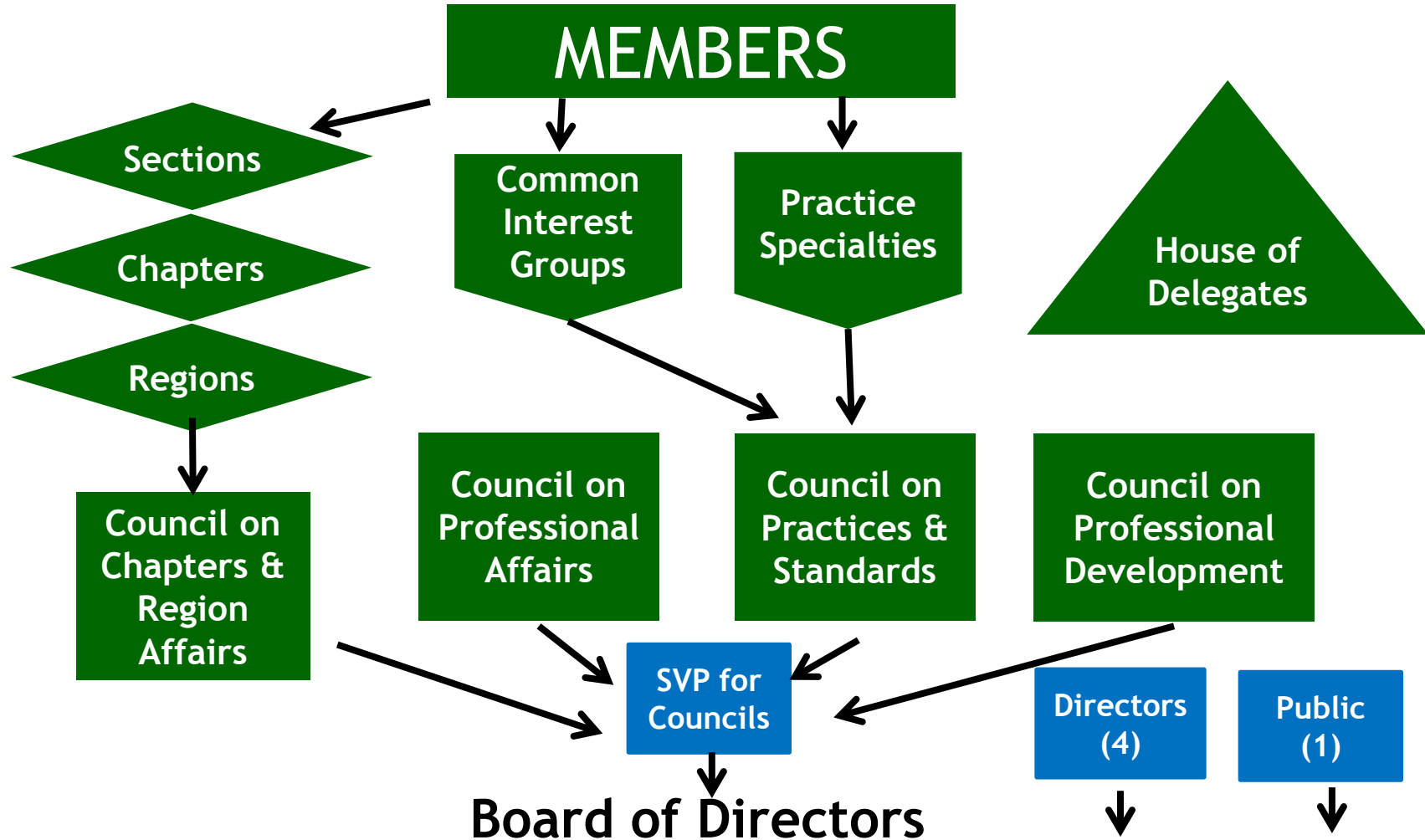


The Process

- **March 2010** Board task force began to review Society structure
- **January 2012** Expanded member working group
- **May 2012** Smaller member group; confirmed findings
- **June/Oct 2012** Board discussions and deliberations
- **February 2013** Continued Board discussions and deliberations. Agreement in principle on a model for member input
- **March/May 2013** RoC presentation on proposed model



Draft Model for Member Input



Executive Committee:
President -- President-Elect -- Sr. Vice President-Councils -- Vice President Finance
Executive Director

Directors (4) -- Public Director



The New Board

President
President-Elect
Sr. Vice President – Councils
Vice President - Finance
Director-At-Large
Director-At-Large
Director-At-Large
Director-At-Large
Public Director
Executive Director / Secretary



What Is Different?

- Board Size Decreased from 16 to 10
- Addition of 1 Public Member
- Elect 8 BoD Members Society-wide
- Separate Governance Function from Operations Function
- Anticipated Expansion of Regions for Additional Chapter Support



Questions & Answers

Please submit your written questions
in the chat box online.



Next Webinar

A follow-up webinar will be held on
Thursday June 6th at 12:00 pm CDT.
Additional information will be posted at
www.asse.org/restructure



Thank you for your time

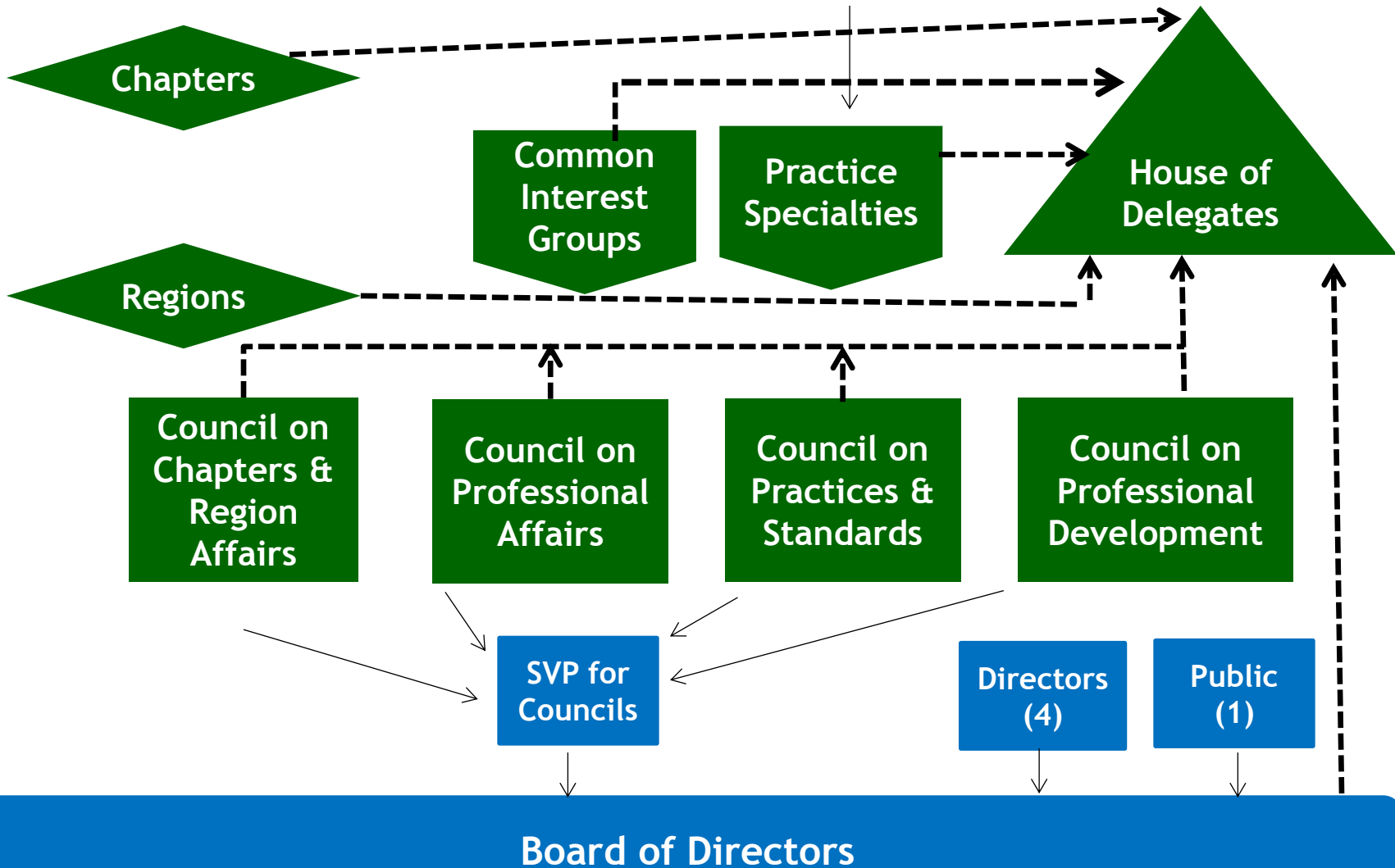
To submit additional questions or comments and to read the answers to all questions submitted visit:

www.ASSE.org/restructure

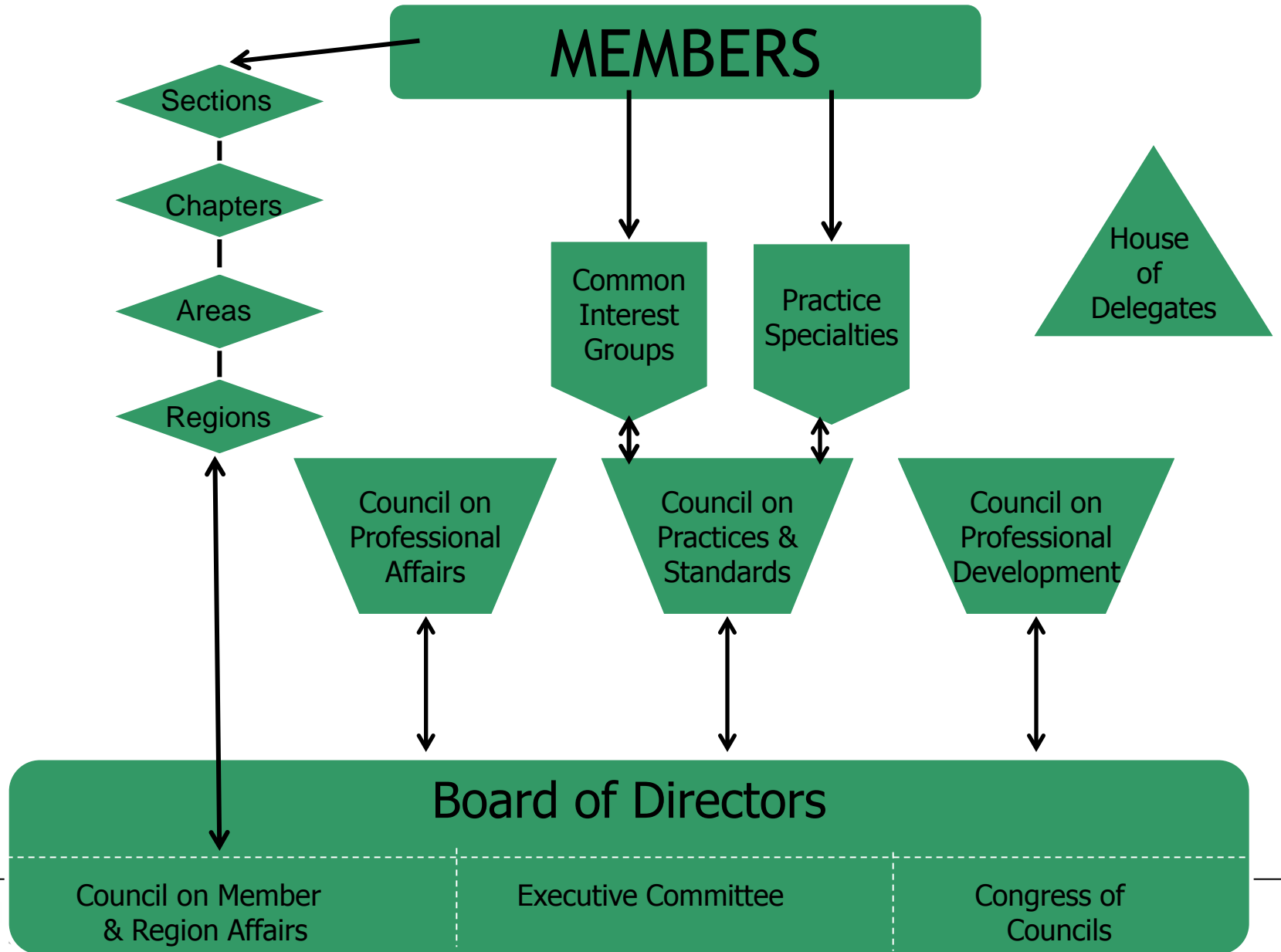


House of Delegate Representation

MEMBERS



Current Structure



Elected Positions by the Full Membership

The Current Board -- 8 out of 16

President

President-Elect

Senior Vice President

Vice President - Finance

Vice President – Council on Practices & Standards

Vice President – Council on Professional Development

Vice President – Council on Professional Affairs

Executive Director

Vice President Region 1

Vice President Region 2

Vice President Region 3

Vice President Region 4

Vice President Region 5

Vice President Region 6

Vice President Region 7

Vice President Region 8



Elected Positions by the Full Membership

The New Board – 8 out of 10

President

President-Elect

Sr. Vice President – Councils

Vice President - Finance

Director-At-Large

Director-At-Large

Director-At-Large

Director-At-Large

Public Director

Executive Director

